



**AIMEE RANKIN** is the mother of a daughter who is medically fragile which caused her to have severe developmental delays and epilepsy. She was a service coordinator at the Independent Living Center and has advocated for disability rights on federal, state, and local levels. She was a parent volunteer and is now a team leader. Aimee has worked for IN\*SOURCE since 2010 and has worked with families who have children with disabilities for more than 20 years.

**ALISON MENDENHALL**, Special Education Liaison, serves southeast Indiana. She is a mother of four. Two of her children have autism and developmental delays. Her experience with researching and navigating First Steps, IEPs, homeschool, therapy services and the public school system, developed her passion to assist other families. Her hobbies and interests include practicing Spanish, spending time with family, traveling, and watching her daughter in Taekwondo.



**AMBER OLIVA**, Business Director, started in 2021. She handles our accounting and administrative duties. She has an associate's degree in accounting and a bachelor's degree in business. She is a single mother to a teenage son who has dealt with a learning disability that started in elementary school. Hobbies and interests are gardening, listening to music, poetry, watching her son play football, and camping. She participates in the Breast Cancer Walk every year.

**AMY HOWARD** has been a special education liaison since 2016. She is a wife and parent to two boys, one who is on the autism spectrum and one who has developmental delays. Passionate about helping parents know how to advocate for their child. She is a supporter of Autism Evansville. She enjoys family time, watching movies, and is a big sports fan.



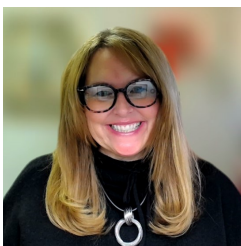
**ANGELA BEAR** is married to Keegan and they have a son, a foster daughter, and 4 fur babies. She enjoys crocheting, gardening, reading, baking, coffee, and meaningful relationships. Experience includes working in special education, homeschooling, ASL interpreting, leadership roles in local homeschool cooperative, and church involvement. She joined the staff in 2022.

**ANGELA BROWN.**, Executive Assistant, is married Eric and they have two children, Eva and Elliott. She homeschooled and helped create homeschool communities for others. She was at Stage One Dance Academy as a senior office & billing administrator where she helped create their homeschool dance program and worked closely with their special needs program. Her hobbies are reading, working out, hiking with family and traveling.



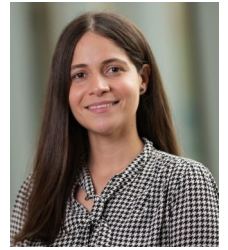
**ANDREA GILKISON** shares two children, Oliver and Sofia and a dog named Roxy, with her husband, Andy. Her son was born with a neuromuscular disorder that comes with Autism and ADHD. She shares, "IN\*SOURCE has been a mainstay of support over the years and I am so happy to be a part of something that help so many the way it helped us." She has worked on councils for early intervention and early childhood education, facilitated support groups, created community programs for people with disabilities, and worked with individuals and families that needed support and resources regarding autism. She joined the staff in 2022.

**AURA ROBLERO**, Bilingual Specialist, is a mother of three, two sons and one daughter, Ivania, who has Down syndrome. She feels fortunate to know her rights and responsibilities in the special education process so her daughter has the opportunity to receive education and supports parents and schools to build a respectful relationship to benefit the student.



**BETH ERNSBERGER**, Associate Director of Community Development, has been with IN\*SOURCE since 2013. She handles marketing and communication efforts, meeting coordination and fundraising. She is mom to Daniel, Isabella and Natalie and wife to Mat. Her brother, Kent, has Down syndrome and lives with her family. Her experience is in event management for national nonprofit organizations. She holds a bachelor's degree from Butler University.

**BRIGETTE TAVÁREZ** is originally from the Dominican Republic. She was an MD and an ESL teacher and found both jobs deeply rewarding. After working with students with disabilities that did not have any support put in place to help them succeed in the classroom, she became interested in working for IN\*SOURCE. She started in 2023.



**CAMILLE SVIHLIK** has worked for IN\*SOURCE since 2015. She is a former special education teacher and administrator for the Indianapolis Public Schools for 39 years and taught special education classes at Butler University. Camille has a bachelor's degree from Ball State and a master's degree from Butler University. Two of her grandsons have ASD. She is a member of the Learning Disabilities Association of America, Indiana Chapter, and a former member & officer in the Council for Exceptional Children (CEC).

**CAROLYN HONEYCUTT**, Assistant Director of Operations, has worked for IN\*SOURCE since 2005 in the South Bend office. She is responsible for managing day-to-day operations including technological support, project coordination, reporting and recording project data. She supervises the administrative assistants. She has a degree in deaf education and has spent many years personally and professionally supporting individuals and families with disabilities.



**CHAVONNE SAUER** has been a K-5 special education teacher, a library media specialist and a stay-at-home mom. Her degree is in elementary education from Indiana University-Bloomington. She and her husband Brian have 2 daughters, Addison and Avery. She loves walking, reading, and listening to podcasts in her spare time. She joined IN\*SOURCE in 2023.

**DALENA JIMENEZ** has been a special education liaison since 2019. She has a bachelor's degree in social work. Her education and personal experience as a mother of children with disabilities helps her serve families with empathy and compassion. Dalena strives to assist families in their special education journeys as IN\*SOURCE has helped her before becoming an employee.



**DR. DAWN MCGRATH**, Executive Director, is a parent of a child with a disability. When she reached out for support of her son, she shares, "IN\*SOURCE helped us find our way into the warm arms of the disability community where there is understanding and support and we are eternally grateful." She has served as the Director of Special Education for the Indiana Department of Education, Director for Special Programs at Kokomo Schools, the Director of Secondary Education at Hamilton Southeastern Schools, and the Deputy Superintendent, Director of Special Education for Elkhart Community Schools. She has her doctorate in special education leadership from Ball State University.

**ELAINE CARPENTER-ERICKSON**, Special Education Liaison, was previously a freelance writer/copy editor and personal care assistant. She discovered her passion for helping others to achieve their personal goals and enhance their quality of life. She graduated from Saint Mary-of-the-Woods College with a degree in English with a focus in professional writing in 2017. She has three children, including a son diagnosed with ADHD and dyscalculia. Elaine enjoys writing, reading, researching, hiking, and spending time with her family.

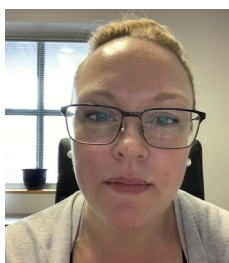


**ETTA MORAN** is a special education liaison in the Indianapolis area. She joined IN\*SOURCE in 2017. She has 2 children and 5 grandchildren, one of whom has a diagnosis of ADHD. She has a master's degree in business education and an endorsement in special education. She has 36 years teaching experience at the post-secondary level and instructed classes in special education for two of those years.



**JACQUELINE STAM-STANAGE**, Administrative Assistant, has been with IN\*SOURCE since 2009. She is the mother of one adult son who has a specific diagnosis of dyslexia, known as Scotopic Sensitivity Syndrome, and ADHD. She volunteers at her granddaughter's school twice a month, and taught religious education at St. Patrick's Parish for 14 years. She was a substitute teacher and has volunteered for Habitat for Humanity and Right to Life.

**JANE FUENTES**, Translation Coordinator, has over 25 years of experience as an English-Spanish interpreter and translator. She has written curriculum for industry-specific and conversational language courses. She has been with IN\*SOURCE since 2010. Jane is currently a board member of Autism Program at Ancilla College, the Transition Advisory Council, and the Heminger House, a shelter for domestic violence victims and their families.



**JENNIFER DIAZ**, Associate Director of Family Services, has been on staff since 2016. She has two children, one of whom has a severe bleeding disorder. She has a master's degree in clinical psychology and a license as a clinical professional counselor. She has spent two decades supporting individuals and families with special needs. She is a member of the Vocational Rehabilitation Commission, Statewide Transition Advisory Council, and Early Childhood Coalition.

**JESSICA TERRY**, Publicity Coordinator, has been with IN\*SOURCE since 2016, previously as a special education liaison, youth trainer and outreach coordinator. Jessica has spent years supporting families with special needs as a service coordinator for the Independent Living Center of Eastern Indiana and as a volunteer for IN\*SOURCE. She is a wife and mother of 4 children and enjoys volunteering in her community.



**JILL SUMMERLOT**, Webinar Coordinator, has been with IN\*SOURCE since 2001. She has 3 children, one of whom has multiple special needs. Jill has special interest and expertise in bullying prevention.

**JODI ROBINSON** has worked for IN\*SOURCE since 2016. She has one stepson and a nephew who has a processing disorder. She spent 15 years supporting individuals with disabilities as an educational assistant, direct service professional, industry program coordinator, and day program manager. She is an active member of the local Systems of Care, the local Disability Awareness Work Group, and a co-leader of Community Resource Alliance Group.







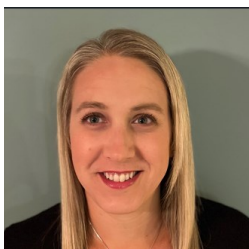
**KAREN RUSK**, Customer Service Coordinator, has been on staff since 2011. She and her husband Clint have three children. Her involvement with IN\*SOURCE came from the experience she had navigating the educational system with her children, all of whom have special needs. Karen is certified in IEP facilitation and dispute resolution and has worked with hundreds of families and students to help them become stronger in the special education process.

**KATIE WELLS** is a mother and step-mother of four children under the age of ten. Three out of her four children have IEPs in the public school system, including dyslexia, dysgraphia, ADHD, anxiety, speech impediment, and ODD. She reached out to IN\*SOURCE for help through her journey and decided she wanted to help other parents and the community in the same way. Katie enjoys spending time outdoors with her kids, animals and in her vegetable garden.



**KENNEDY HENSON**, is a call center specialist. She was previously a kindergarten teacher and found her passion for special education. She graduated from IUPUI in 2019 in elementary education and a license in ESL. She and her husband have a son named Jude. Kennedy enjoys camping, hiking, going to concerts, spending time with her family, and watching new movies.

**KELLY SHEPHERD** has worked for IN\*SOURCE since 2018. She was a special education teacher for 27 years. She tutors students with disabilities and volunteers at the Literacy Alliance. She has a master's degree in mild disabilities from the University of Saint Francis. She is a member of the Systems of Care. Four children and nine grandchildren keep her busy. She has a grandson with disabilities and helps support her daughter in the special education process. She is an Indiana Advanced Master Naturalist, volunteers for the zoo, raises monarchs, loves outdoor activities like biking, hiking and kayaking and is a yoga Instructor at the YMCA and a retirement home.



**KRISTIE MCGUIRE** is a wife and mother of two boys, both of whom have a specific diagnosis of dyslexia, dysgraphia, dyscalculia, ADHD, and anxiety disorders. Her youngest son also has auditory processing disorder. She has attended numerous trainings and workshops, including Special Education Advocate Training, a year-long intensive training and the Dyslexia Advocate Certificate Program. She enjoys spending time outdoors, gardening, and watching movies with her family.

**LEISA BARBER**, Transition Coordinator, has been with IN\*SOURCE since 2013. She is a parent of five children, three of whom have disabilities, one of whom has severe emotional disabilities. She has an associate's degree in business management. She has served on the Mental Illness Advisory Council and the Indiana Disability Rights Council. She is a Disability Awareness Merit Badge counselor for Boy Scouts of America, is engaged with helping scouts with disabilities understand that they can be involved in their communities and helps run two summer camps.



**LINNY FOERG**, Special Education Liaison, serves Lake County. She lives in Hobart, with her daughter, fiancé, and a few furry family members. After years in special education as a para and a teacher, she is grateful to be part of an empathetic organization allows her to focus on her passion for civil rights while providing the flexibility needed to support her daughter as she navigates her newly diagnosed challenges. When she isn't at work or home, she can be found at the local high school theater directing and educating young thespians.



**LESA PADDACK**, Assistant Director of Technical Expertise, has worked for IN\*SOURCE since 2005. She has 4 adult children, one of whom has autism. She has a bachelor's degree in human services from Indiana Wesleyan and finished a traineeship at IU School of Medicine at Riley Child Development Center. She serves on many boards including the Indiana State Advisory Council.

**MARIA ALVAREZ-RODRIGUEZ**, Bilingual Specialist, serves families in English and Spanish. She was a special education teacher for 20 years and a general education teacher for 4 years. Maria has done interpreter work in the medical and education fields while in the Peace Corps. She has a son on the autism spectrum.



**MICHELLE JONES**, Team Leader, holds a bachelor's degree in social and behavioral sciences and brings over 20 years of social services experience in the disability field. She loves sharing information on community programs available to families. She enjoys working through the process so each child reaches their full potential. Michelle is married with two daughters, her youngest has a 504 Plan. She spends her free time reading, doing outdoor activities, taking care of 4H animals) and watching baseball and college softball.

**MICHELLE SANCHEZ**, Spanish Communication Specialist, has been with IN\*SOURCE since 2015. She was born in Brooklyn, New York and raised in Indiana. She graduated from Goshen High, certified as a medical assistant, and worked in both pediatrics and OBGYN. She has 3 beautiful children, the oldest of whom has autism and is deaf. She loves to read and run and she shares, "I hope to provide compassion and understanding to those I come in contact with."



**NICOLE HICKS** has worked for INSOURCE for since 2013 and is a team leader. She is the parent of four boys, one of whom has special needs. Nicole has experience working as an ally for the Autism Society of Indiana for 5 years, is a member of the Commission of Seclusion and Restraint, serves on multiple local Systems of Care committees and is a CASA Volunteer.

**PARIS HART** is an IUPUI graduate who found her niche at IN\*SOURCE, working directly with families who have children with disabilities. Paris and her daughter enjoy going to parks, the zoo, and petting puppies. She enjoys reading books and watching cooking competitions. Her favorite cooking competition show is Top Chef with Iron Chef coming in a close second!



**PAULA TEAGUE**, who retired from IN\*SOURCE in 2021, returns to assist in the call center. She has seven children, nine grandchildren. She has a broad knowledge of special education. She and her family love to travel, camp and spend time at the local airport involved in general aviation.

**RHONDA CROUCH** has been a kindergarten teacher for 15 years. She has a daughter and a son with special needs. She teaches music part-time as a kindergarten aide. She sings with the chorus of the Northwest Indiana Symphony Orchestra and for weddings and funerals at her husband's church. They are a theatre, music, Comic Con, board game/video game family!

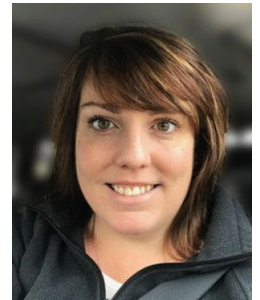


**SAMANTHA DRUDGE** is a special education liaison and has been with IN\*SOURCE since 2020. She is a parent of three boys, two of whom have disabilities. Her family has one dog two cats and a turtle, and she lovingly refers to them as her 'fur babies'. She has been in the special education community in a variety of areas including special education pre-k classroom, aba center and autism advocacy agency. She loves helping families and she is interested in cross stitching, reading, and hiking.



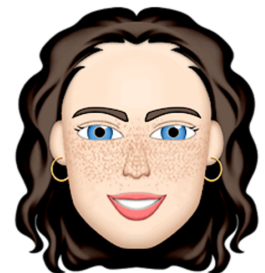
**SARAH CASSAUGH**, Assistant Director of Regional Teams, was brought to IN\*SOURCE through personal experience and passion for helping families navigate the special education process. She has worked in both Michigan and Indiana in their federally funded Parent Training and Information Centers. She was the recipient of the Indiana Council for Exceptional Children Outstanding Advocate of the Year 2021.

**SARAH HOLMES**, Team Leader, joined the IN\*SOURCE staff in 2016. She supports families who are navigating the special education process in Northern Indiana. She and her husband are proud parents to 2 boys, one with Autism and one with ADHD.



**SASHA SHETLER** is blended family mom of 4, two sons and two daughters. Her daughters have ADHD, and one has DMDD. She has always had a passion for helping families and kids with special needs. She is RBT certified and has a background in working with children with autism. She worked at Bashor Children's Home with a focus on residential children that have sexually maladaptive behaviors. She has a rare form of muscular dystrophy, herself, and would have loved for someone to have advocated for her to help accommodate the struggles she faced because of her disability. She is very passionate about the community of parents and students who have disabilities and strives to work alongside them with understanding and sensitivity.

**TRISH VAN SKYHAWK**, Administrative Assistant, has worked for IN\*SOURCE since 2017. She has 3 children; one daughter, and twin sons. One of her sons has an ISP. Before coming to IN\*SOURCE, she was a case manager/foster care coordinator at a LCPA where she worked with foster children, many of whom had special needs.



**WILNER POPE-CUSIC**, Equitable Access Coordinator, has worked for IN\*SOURCE since 1994. She is the mother of 3 adult children, one of whom has a diagnosis of autism. Wilner is a founder of Community Action for Education, served on the Governor's Planning Council, and several statewide transition counsels and advisory boards. She is an "ACEs" (Adverse Childhood Experiences) trainer, has presented at ICASE, is a graduate of Partners in Policy Making and has testified before the Indiana legislature concerning special education rights. She is an acting member of Community Forum and the NAACP's education committee.